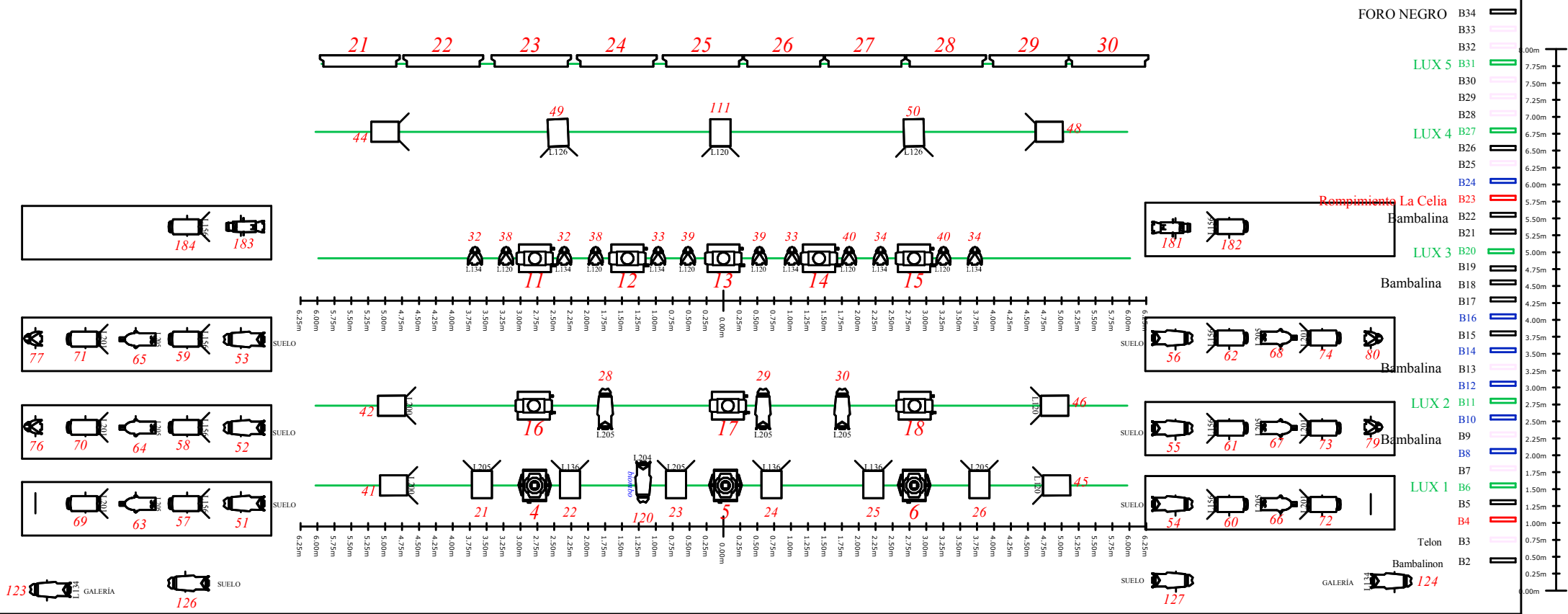
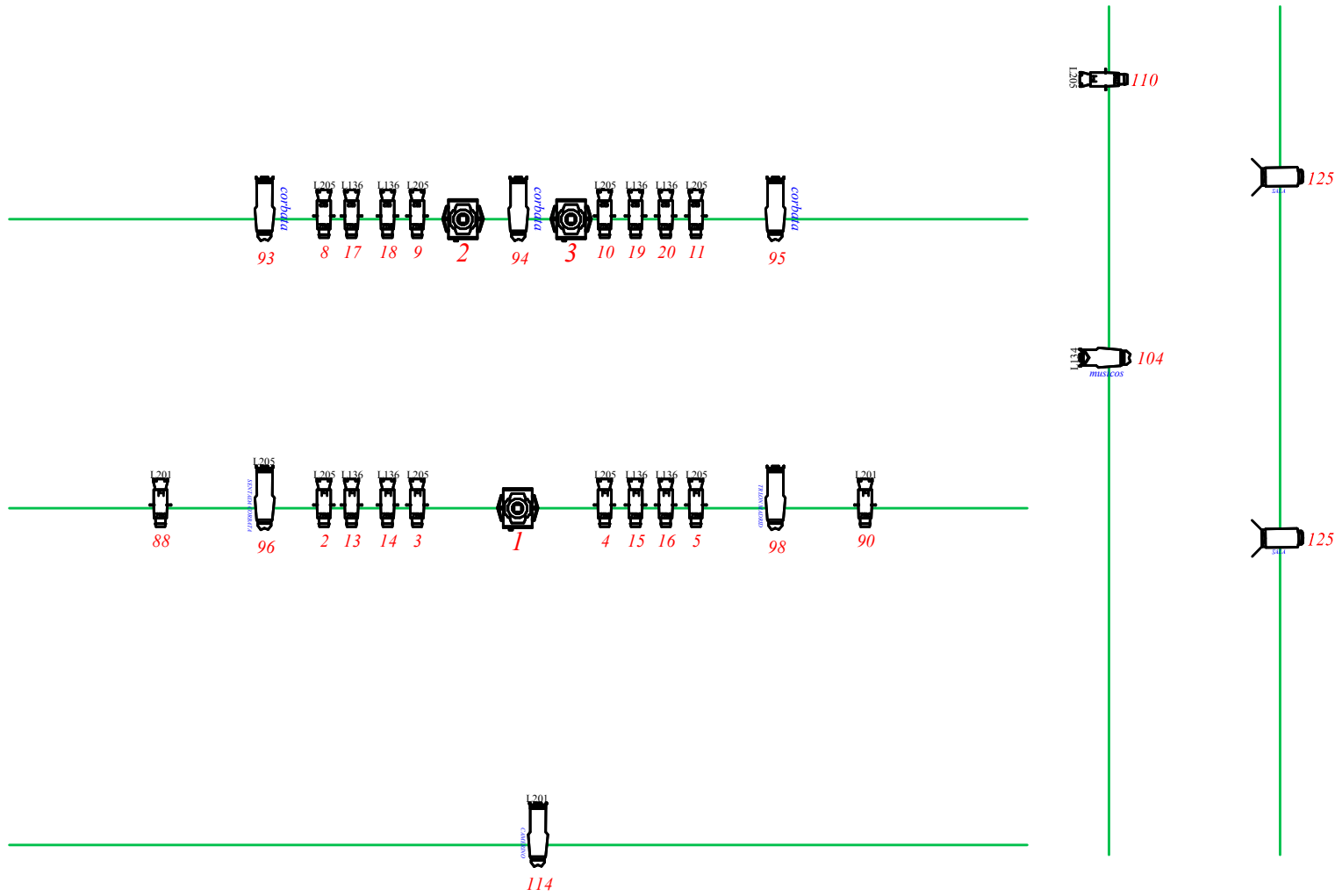


LA CELIA / CABARET
 Iluminacion: juanjo Llorens
 PLANO ESCENARIO 1_4

24_10_15 V Moviles






LA CELIA / CABARET
 Iluminacion: juanjo Llorens
 PLANO SALA 2_4
 24_10_15 V Moviles

LA CELIA
Iluminacion: juanjo Llorens
PLANO ESCENARIO 4_4

24_10_15 V Moviles

ELEMENTOS DE LUZ DE LA CELIA

CANAL 131 Mesa de camerinos con bombillas 

CANAL 223 Carra luna con bombillas 

CANALES 161 - 162 - 163 - 164 DE LAS BOMBILLAS DE LOS ROMPIMIENTOS (4 CANALES ROMPIMIENTO 1)    

CANALES 157 - 158 - 159 - 160 DE LAS BOMBILLAS DE LOS ROMPIMIENTOS (4 CANALES ROMPIMIENTO 2 MARCO)    

CANALES 143 - 144 - 145 - 146 - 147 - 148 - 149 - 150 - 151 - 152 - 153 - 154 - 155 - 156 DE LAS BOMBILLAS DE LOS ROMPIMIENTOS (14 CANALES ROMPIMIENTO 2 VERTICALES)











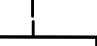


LA CELIA

Director: Emilio Saggi

Escenografía: Daniel Bianco

Iluminación: juanjo Llorens

	06	ETC 15/30
	15	ETC 25/50
	14	ETC 19 grados
	08	ETC 26 grados
	06	STRAND LIGHT 36 grados
	16	ETC SOUR FOUR LENTE 5
	14	PC RAMA
	15	ARENA TEATRO FRESNEL
	06	ALPHA PROFILE 1200
	08	ROBE COLOR WASH 1200
	10	BARRAS DE LEDS RGB

REGULACION Y CONTROL

112 Canales de Dimmer de 2,5 Kw.

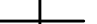




1 Mesa de control MA Series 1

COLORES

Lee 120, Lee 134, Lee 136, Lee 156, Lee 200, Lee 201, Lee 205

ESTRUCTURAS Y SOPORTES

CALLES DE LUZ

	3,40 aprox
	2.55 aprox
	1,70 aprox
	0.85 aprox
	0.00 aprox

LA CELIA / CABARET

Iluminación: juanjo Llorens

PLANO LEYENDA 3_4